



Plated 1-10mm Thk CuNi Alloy Clad Laminated Sheet Plate Monel 400 For construction

Our Product Introduction

Basic Information

- Place of Origin: china
- Brand Name: jinshunlai
- Certification: ISO, AISI, ASTM, GB, EN, DIN
- Model Number: 0.1mm-900mm
- Minimum Order Quantity: 1kg
- Price: Contact Us
- Packaging Details: Waterproof Paper, Steel Strip Packed and other Standard Export Seaworthy Package, or customized package
- Delivery Time: 5days
- Payment Terms: L/C, T/T , Western Union
- Supply Ability: 90000ton

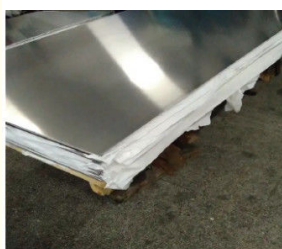


Product Specification

- Chemical Composition: Cu-Ni
- Corrosion Resistance: Excellent
- Elongation: 30-40%
- Hardness: 90-110 HB
- Heat Treatment: Annealing
- Tensile Strength: 400-550 MPa
- Thermal Conductivity: 50-70 W/mK
- Yield Strength: 200-350 MPa
- Electrical Resistivity: 0.2-0.5 $\mu\Omega\cdot m$
- Magnetic Properties: Non-magnetic
- Material: Copper Nickel Alloy
- Highlight: **FR4 Copper Nickel Alloy, Monel 400 Copper Nickel Alloy, Monel nickel plated copper sheet**



More Images



for more products please visit us on copper-solid.com

Product Description

Copper Nickel Alloy

Material: T1,T2,C10100,C10200,C10300,C10400,C10500,C10700,C10800,C10910,C10920,TP1,TP2,C10930,C11000,C11300,C11400,C11500,C11600,C12000,C12200,C12300,TU1,TU2,C12500,C14200,C14420,C14500,C14510,C14520,C14530,C17200,C19200,C21000,C22000,C23000,C24000,C26000,C27000,C27400,C28000,C33000,C33200,C34000,C34200,C35000,C35600,C36000,C37000,C37700,C37710,C38000,C44300,C44400,C44500,C60800,C63020,C65500,C68700,C70400,C70600,C70620,C71000,C71500,C71520,C71640,C72200,Etc.

Length: 2m,3m,5.8m,6m, Or As Required.

Machining: Customization

* All Products Are Customizable

Copper Nickel Alloy Description

Surface: Mill,Polished,Bright,Oiled,Hair Line,Brush,Mirror,Sand Blast,

Price Term: Ex-Work, FOB, CFR, CIF, Etc.

Package: Export Standard Package: Bundled Wooden Box, Suit For All Kinds Of Transport,Or Be Required.

Delivery Time: 7-10 Working Days If This Goods Will Be Produced After Order.

Copper Rod Specification

Alloy grade	Resistance temperature coefficient× 10 ⁻⁵ /K (20℃~600℃)	Melting point ℃	Density g/cm ³	Specific heat capacity J/(g·K)	Thermal conductivity W/(m·K)	Linear average expansion coefficient 10 ⁻⁶ /K (20℃~400℃)	Thermoelectric electromotive force of copper μV/K (0℃~100℃)
NC003	<120	1085	8.9	0.38	145	17.5	-8
NC005	<100	1090	8.9	0.38	130	17.5	-12
NC010	<60	1095	8.9	0.38	92	17.5	-18
NC012	<57	1097	8.9	0.38	75	17.5	-22
MC012	<38	1050	8.9	0.39	84	18.0	—
NC015	<50	1100	8.9	0.38	59	17.5	-25
NC020	<38	1115	8.9	0.38	48	17.5	-28
NC025	<25	1135	8.9	0.38	38	17.5	-32
NC030	<16	1150	8.9	0.38	33	17.5	-34
NC035	<10	1170	8.9	0.39	27	17.0	-37
NC040	0	1180	8.9	0.40	25	16.0	-39
NC050	-6<	1280	8.9	0.41	23	15.0	-43

Shipment



We Use High-Quality Raw Materials, And Strictly Control The Production Process To Ensure That All Products Are In Line With International Standards Of Quality Products. We Can Provide Third-Party Quality Inspection Certificates, And We Pay Attention To The Reliability Of Product Quality And The Authenticity Of Test Results.

Inventory & Packaging



Export Standard Package: Bundled Wooden Box, Suit For All Kinds Of Transport, Or Be Required.



Wuxi Jinnuo copper Co.,Ltd



+86-17763564398



sales01@shuangheyisteel.com



copper-solid.com

32 Chengnan Road, New District, Wuxi City, Jiangsu Province, China